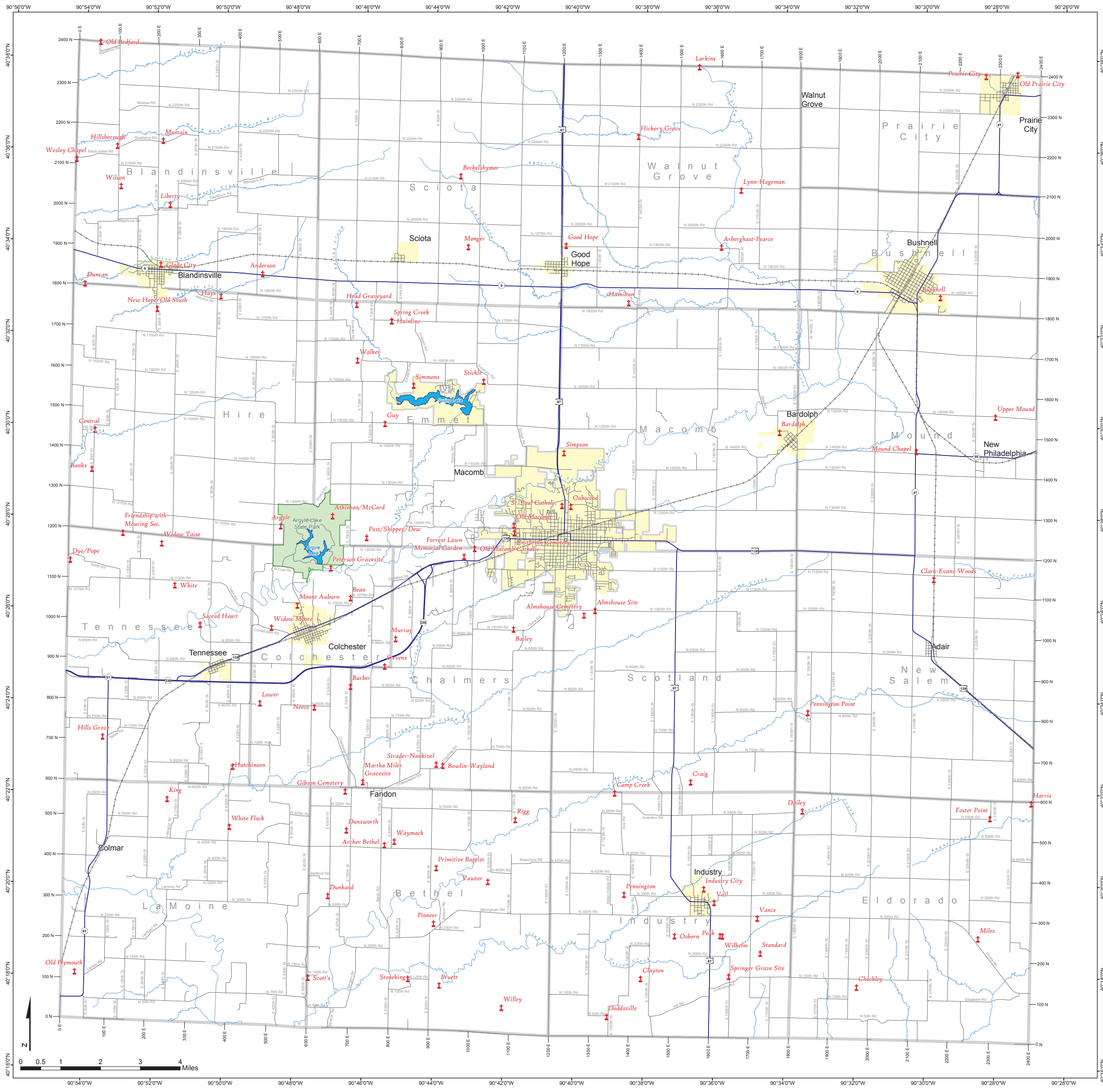


Cemeteries of McDonough County, Illinois



McDonough County Genealogical Society

P.O. Box 202, Macomb, Illinois 61455



Common Name with Alternative Names	XY Coordinates
Almshouse Cemetery	W90° 39' 43.48" N40° 23' 53.10"
Almshouse Site	W90° 39' 24.55" N40° 23' 59.05"
Anderson	W90° 48' 57.44" N40° 33' 16.48"
Arberghast-Pearce	W90° 35' 51.03" N40° 33' 54.91"
Archer Bethel	W90° 45' 22.43" N40° 20' 51.07"
Argyle	W90° 48' 23.47" N40° 27' 47.17"
Atkinson/McCord	W90° 46' 54.74" N40° 29' 06.65"
Bailley	W90° 41' 43.87" N40° 25' 34.09"
Banks	W90° 53' 47.49" N40° 29' 06.32"
Barber	W90° 46' 22.01" N40° 24' 18.00"
Bardolph	W90° 34' 09.98" N40° 29' 53.02"
Bean	W90° 46' 23.13" N40° 26' 13.80"
Beckelshymer	W90° 43' 18.57" N40° 35' 26.20"
Bowlin-Wayland	W90° 43' 43.58" N40° 22' 35.34"
Bushnell	W90° 29' 35.46" N40° 32' 50.14"
Camp Creek	W90° 38' 49.28" N40° 22' 06.63"
Central	W90° 53' 42.39" N40° 29' 51.79"
Chockley	W90° 31' 54.46" N40° 17' 48.16"
Clark-Evans-Woods	W90° 29' 45.01" N40° 26' 41.57"
Clayton	W90° 38' 03.50" N40° 17' 58.20"
Craig	W90° 36' 39.51" N40° 22' 15.53"
Dalley	W90° 33' 28.35" N40° 21' 38.23"
Doddsville	W90° 39' 01.03" N40° 17' 08.30"
Duncan	W90° 54' 01.86" N40° 33' 02.64"
Dunward	W90° 46' 58.48" N40° 29' 44.15"
Dunsworth	W90° 46' 22.48" N40° 21' 10.17"
Dye/Pope	W90° 54' 05.02" N40° 27' 03.07"
Forrest Lawn Memorial Garden	W90° 43' 09.19" N40° 27' 09.02"
Foster Point	W90° 28' 07.54" N40° 21' 29.25"
Friendship with Mouring Sec.	W90° 52' 53.66" N40° 27' 37.00"
Gibson Cemetery	W90° 46' 30.00" N40° 22' 00.98"
Glade City	W90° 51' 51.98" N40° 33' 28.01"
Good Hope	W90° 40' 17.47" N40° 33' 56.17"
Guy	W90° 45' 26.04" N40° 30' 02.00"
Hainline - Section of Spring Creek	W90° 45' 15.73" N40° 33' 16.22"
Hamilton	W90° 38' 29.73" N40° 32' 41.66"
Harris	W90° 26' 57.07" N40° 21' 48.66"
Hays	W90° 50' 08.76" N40° 32' 47.22"
Head Graveyard	W90° 46' 15.97" N40° 32' 37.15"
Hickory Grove	W90° 38' 14.20" N40° 36' 19.14"
Hills Grove	W90° 53' 25.55" N40° 23' 10.62"
Hillsborough	W90° 53' 08.08" N40° 36' 02.94"
Hutchinson	W90° 49' 42.70" N40° 22' 32.22"
Industry City	W90° 36' 16.23" N40° 19' 55.94"
King	W90° 51' 34.43" N40° 21' 49.63"
Larkins	W90° 36' 30.25" N40° 37' 50.61"
Liberty	W90° 51' 36.80" N40° 34' 46.40"
Lower	W90° 48' 56.94" N40° 23' 55.57"
Lynn-Hageman	W90° 35' 17.58" N40° 33' 09.58"
Martha Miller Gravesite	W90° 46' 00.08" N40° 22' 13.46"
Miles	W90° 28' 27.31" N40° 18' 51.92"
Monger	W90° 43' 05.11" N40° 33' 53.73"
Mound Chapel	W90° 30' 15.54" N40° 29' 28.82"
Murray	W90° 47' 54.12" N40° 28' 03.21"
Murray	W90° 45' 05.56" N40° 25' 20.67"
Mustain	W90° 51' 49.57" N40° 36' 10.05"
Neece	W90° 47' 23.69" N40° 23' 50.53"
New Hope/Old South	W90° 51' 57.56" N40° 32' 30.14"
Oakwood	W90° 40' 07.00" N40° 28' 14.99"
Old Bedford	W90° 53' 38.12" N40° 38' 18.57"
Old Macomb	W90° 41' 44.02" N40° 27' 56.00"
Old Macomb Catholic	W90° 42' 51.10" N40° 27' 19.18"
Old Plymouth	W90° 54' 10.47" N40° 18' 03.28"
Osborn	W90° 27' 23.88" N40° 37' 42.16"
Osborn	W90° 37' 05.72" N40° 18' 54.35"
Peak	W90° 35' 48.03" N40° 18' 54.82"
Pennington Point	W90° 33' 19.50" N40° 23' 47.15"
Pennington	W90° 38' 32.46" N40° 19' 48.16"
Pioneer	W90° 46' 57.29" N40° 26' 52.71"
Pioneer	W90° 43' 57.67" N40° 19' 08.87"
Post/Shippey/Dew	W90° 45' 56.19" N40° 27' 32.25"
Prairie City	W90° 28' 18.08" N40° 37' 39.42"
Primitive Baptist	W90° 43' 53.61" N40° 20' 21.64"
Pruett	W90° 43' 47.45" N40° 17' 48.16"
Rigg	W90° 41' 39.04" N40° 21' 25.19"
Sacred Heart	W90° 50' 40.17" N40° 25' 37.69"
Scotty	W90° 47' 31.76" N40° 17' 57.27"
Simmons	W90° 44' 37.36" N40° 30' 52.14"
Simpson	W90° 40' 19.22" N40° 29' 25.11"
Spring Creek	W90° 45' 15.73" N40° 32' 16.22"
Springer Grave Site	W90° 33' 32.89" N40° 18' 01.61"
St. Paul Catholic	W90° 40' 22.01" N40° 28' 18.00"
Standard	W90° 34' 39.22" N40° 18' 31.92"
Stevens	W90° 45' 23.99" N40° 24' 44.57"
Stickle	W90° 42' 37.37" N40° 30' 57.93"
Stonaker	W90° 44' 40.88" N40° 17' 56.49"
Strader-Nankivel	W90° 43' 54.63" N40° 22' 36.89"
Unitarian Cemetery	W90° 41' 43.36" N40° 27' 40.04"
Upper Mound	W90° 28' 00.30" N40° 30' 14.07"
Vail	W90° 35' 58.26" N40° 19' 38.15"
Vance	W90° 34' 44.43" N40° 19' 17.94"
Vawter	W90° 42' 25.19" N40° 20' 03.88"
Walker	W90° 46' 13.76" N40° 31' 24.60"
Waymack	W90° 42' 05.55" N40° 20' 55.75"
Wesley Chapel	W90° 54' 17.62" N40° 33' 45.39"
White	W90° 51' 23.98" N40° 26' 28.92"
White Flock	W90° 49' 47.62" N40° 21' 13.69"
Widow Moore	W90° 48' 37.90" N40° 23' 34.34"
Widow Taise	W90° 51' 46.97" N40° 27' 23.79"
Wilhelm	W90° 35' 43.75" N40° 18' 54.33"
Willey	W90° 42' 00.83" N40° 17' 15.51"
Wilson	W90° 53' 01.40" N40° 35' 10.23"



● Cemeteries
— Railroads
— U.S. and State Highways
— Township Road
■ Major Lake
■ State Park
■ Town
■ Township

Disclaimer:
 These cemetery locations are believed to be accurate. Note that some are on private land and are not open to the public. Please receive owner's permission before trespassing on private land.